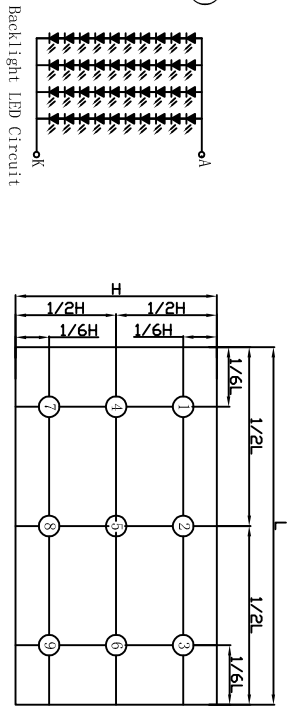
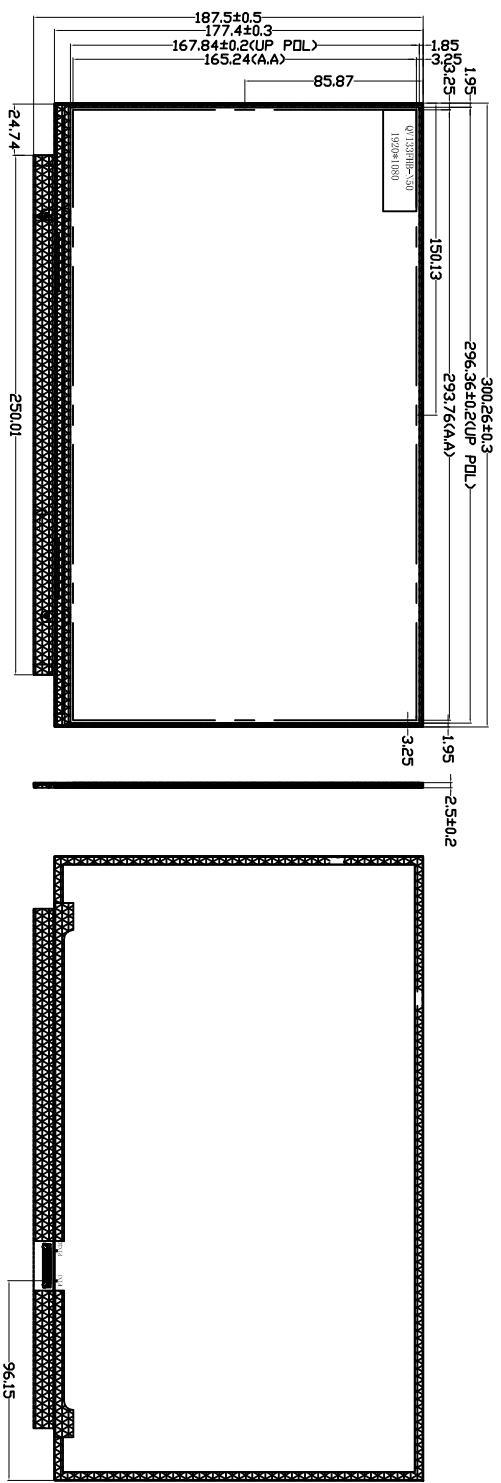


Customer Code. :		SPECIFICATION OF BACKLIGHT	
CUSTOMER'S P/N:		EDITION: 01	
FX' S P/N(exclude wrapper):		(include wrapper)	
Approval (核准)		Approval (核准)	
Check (检查)		Check (检查)	
Design (设计)		Design (设计)	

Date:	Page:	THE THIRD ANGLE
1/1	1/1	



REV	DATE	DESCRIPTION (修改内容)	REVISER	NO.	DETAILS	Quantity
1				1	Rear iron frame (下铁框)	
2		Reflector film (反射膜)		2		
3		Light guide plate (导光板)		3		
4		Diffuser film (扩散片)		4		
5		BEF(偏光片)		5		
6		LED (发光二极管)		6		
7		Wire (导线)		7		
8		PCB(印制电路板)		8		
9		HOUSING (塑胶框)		9		
10		DOUBLE SIDED STICK (双面胶)		10		
11		PPC (铁制电路板)		11		
12		Front iron frame (上铁框)		12		

- Notes:
- Unit:mm.
 - Do not scale drawing.
 - All radii without dimension R0.2.
 - Modification Mark.
 - draft angle: 1°
 - Backlight Center Luminance :模组350cd/m²(TYP)
 - Luminance uniformity: 75% (min)/max*100%)
 - Unspecified Tolerance is ±0.2
 - Operation conditions : If= 80mA, Vf=28-32 (MAX)
 - Color coordinate:X=0.27-0.35, Y=0.27-0.35
 - All materials comply with RoHS
 - The measured value of Luminance and color coordinate bases FX' s BM-7
 - Check item: 1~9

Customer:	Approval Date:	Approve by:
客户	确认日期	确认