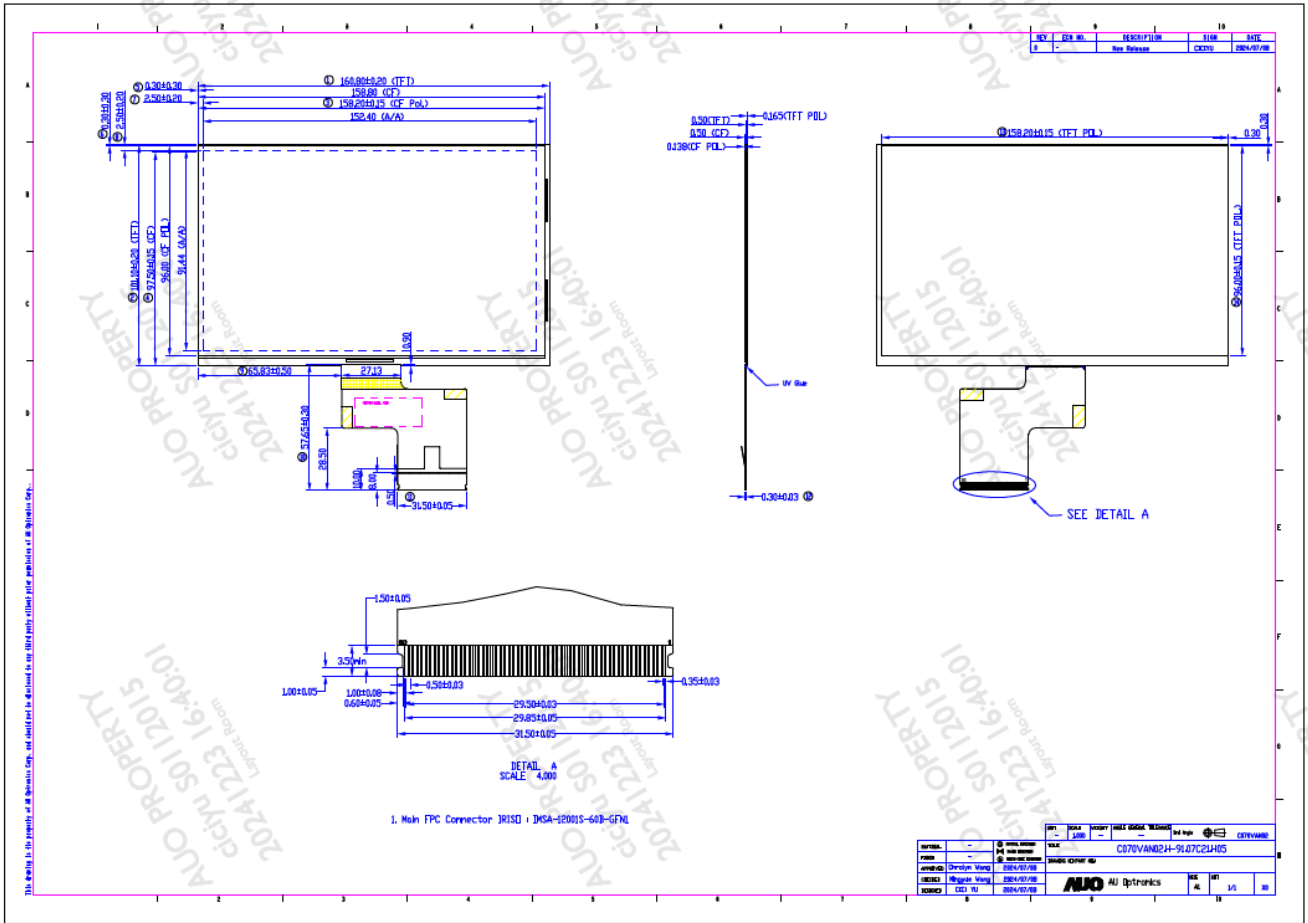




D. Outline Dimension



E. Electrical Specifications

1. Pin Assignment

a. Main FPC

Connector = HIROSE, FH52-60S-0.5SH

No.	Pin Name	I/O	Description	Remarks
1	GND	-	Ground	
2	VDDA_L	P	Analog power supply voltage. Recommend adding TVS diode	
3	VDD_L	P	Power for Logic. Recommend adding TVS diode	
4	GND	-	Ground	
5	DCLK	-	Clock For Input Data	
6	R7	I	Red Data7	
7	R6	I	Red Data6	
8	R5	I	Red Data5	
9	R4	I	Red Data4	
10	GND	-	Ground	
11	R3	I	Red Data3	
12	R2	I	Red Data2	
13	R1	I	Red Data1	

ALL RIGHTS STRICTLY RESERVED. ANY PORTION OF THIS PAPER SHALL NOT BE REPRODUCED, COPIED, OR TRANSFORMED TO ANY OTHER FORMS WITHOUT PERMISSION FROM AUO CORPORATION.