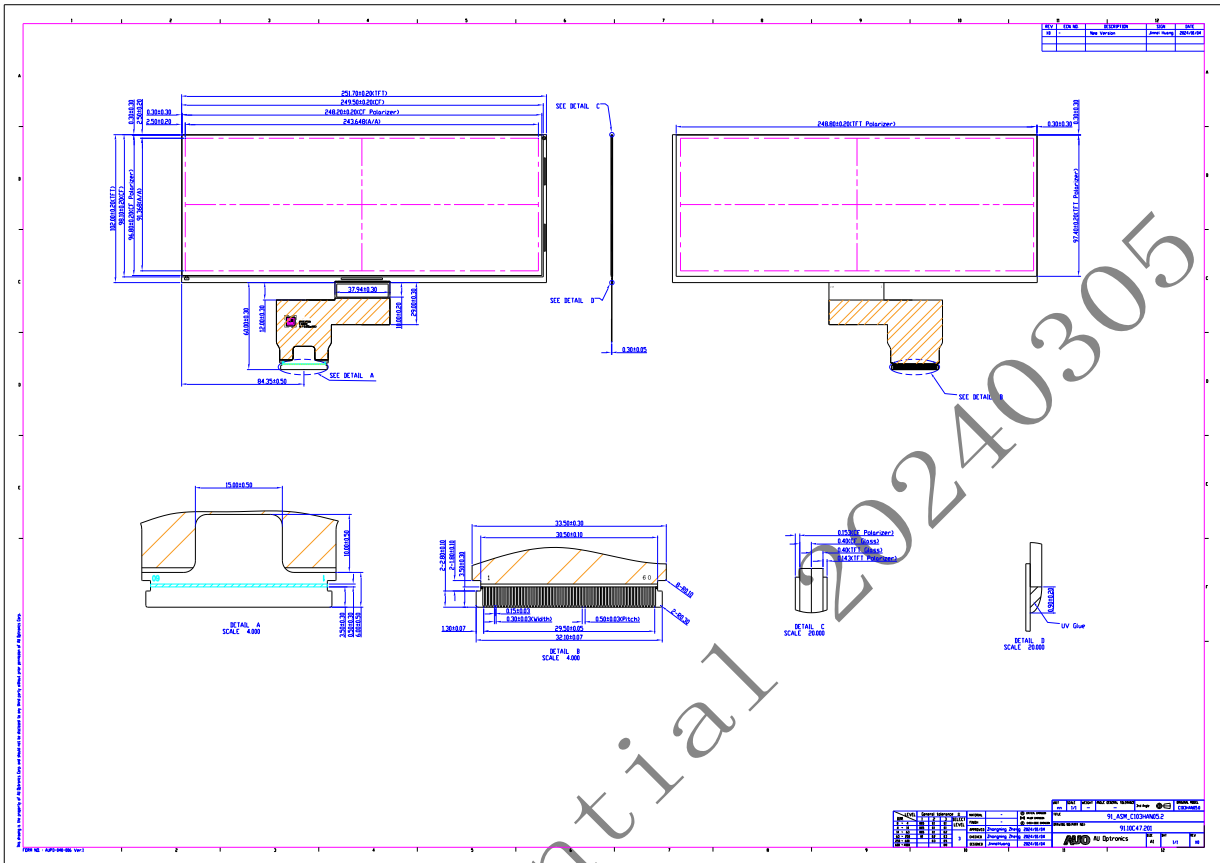


D. Outline Dimension



E. Electrical Specifications

1. Pin Assignment

a. Main FPC

Connector = 捷康, 101049-206060

No.	Pin Name	I/O	Description	Remarks
Pin 1	GND	-	Ground	
Pin 2	SGOFF	In	The SGOFF signal controls the slow gate off enable,default SGOFF=L,SGOFF=H:Slow gate off enable,output H duty is same as CPV H duty	
Pin 3	OEPSN	In	Pre-scan function enable pin,default OEPSN=L,when this pin is set to H and the driver output width is two CPV clocks period,the OE signal is effective only on the rising edge and the falling edge of the OUTn.When this pin is set to L,OE is always effective to OUTn	
Pin 4	VBIAS	In	switch driver outputs for discharge output loading. The application circuits are as follows. When SGOFF =H,the falling slew rate of SGOFF can be controlled by the connected resistor R.The vaule of resistor	