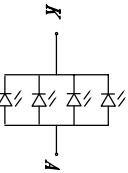
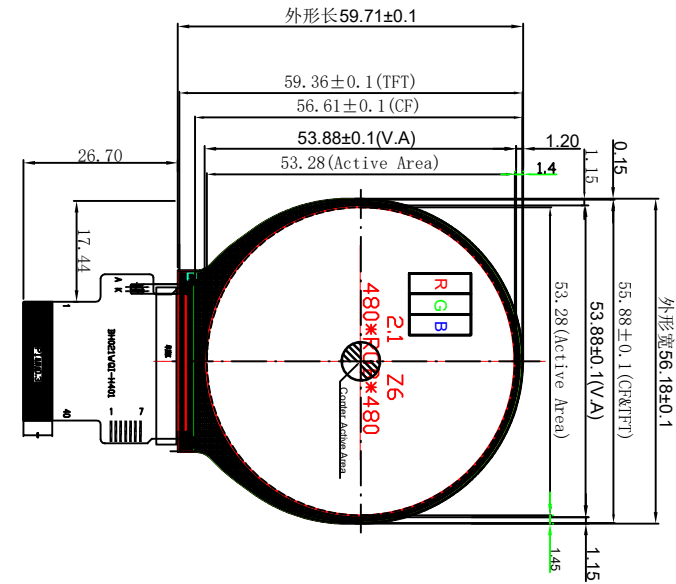
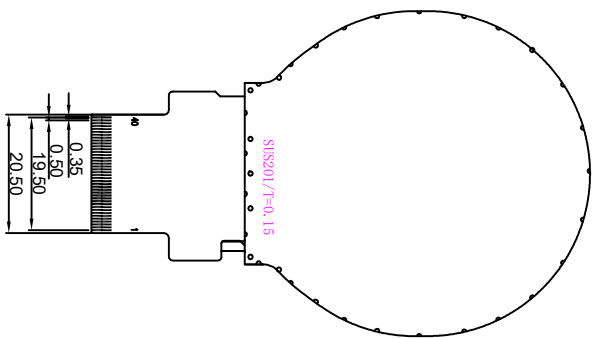
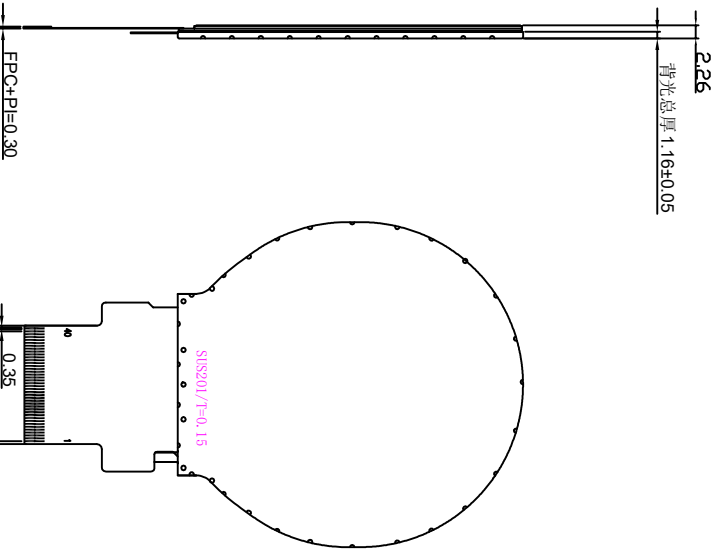


REV.	DATE	MODIFICATION
1.0	2024/09/18	First Issue



LED 4 PCS, 80mA/3.2V
BACKLIGHT CIRCUIT DIAGRAM



LCM PIN DEFINITION

PIN ASSIGNMENT	PIN ASSIGNMENT	PIN ASSIGNMENT	PIN ASSIGNMENT
1 LBLA	11 CS	21 B5	31 B3
2 LBLB	12 PZLA	22 B6	32 B4
3 LBLK	13 DE	23 B7	33 B5
4 GND	14 VS	24 GND	34 GND
5 VCC	15 BS	25 CS	35 TP-DIT
6 RESST	16 B0	26 C4	36 TP-S0A
7 NC	17 B1	27 B5	37 TP-S0Z
8 NC	18 B2	28 B0	38 TP-AST
9 S0A	19 B3	29 R1	39 TP-VCC
10 S0Z	20 B4	30 B2	40 GND

C-TP PIN DEFINITION

PIN ASSIGNMENT
1 TP-VCC
2 TP-AST
3 TP-RGB
4 TP-S0Z
5 TP-S0A
6 TP-DIT
7 GND

深圳市爱普拓思科技有限公司

Display Type	TFT	RGB Interface	FPC Connector	MODEL NAME	PART NO.
Viewing Angle	ALL	INTERFACE	FPC Connector	TFT Display Module	DBT021HFN4QR030A
LCD Driver IC	ST7701S	VIEWING DIRECTION	ALL	DWN	REV. SHEET OF
Logic Voltage	VDD=2.8V	GRAY SCALE DIRECTION	ALL	CHKD	1.0 1/1
Operation Temperature	-20°C TO 70°C	PROJECTION	FREE	3RD ANGLE	SCALE
Storage Temperature	-30°C TO 80°C				1:1
Interface	18BIT RGB INTERFACE				±0.3
Backlight	4-LED WHITE 80MA/3V				
Surface Luminance					